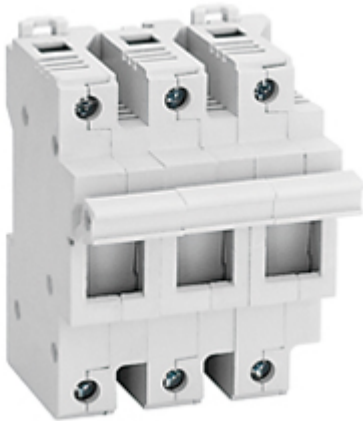


Part number

VS 1451.3



Sectionable fuse carrier, VS series, for cylindrical fuse-links 14 x 51 mm, three-pole, 4,5 modules

Product description

| | |
|----------------------|--|
| Product type | Sectionable fuse carrier |
| Series | VS |
| Specification | For cylindrical fuse-links 14 x 51 mm Three-pole, 4,5 modules |

Technical data

| | |
|--------------------------------|------|
| IP degree of protection | IP20 |
|--------------------------------|------|

Further technical details

| | |
|----------------------------------|----------|
| Weight | 462,00 g |
| UL 94 flammability rating | V-0 |

Material properties

| | |
|---------------|---------------|
| Colour | RAL 7032 grey |
|---------------|---------------|

General ordering information

| | |
|-------------------|---------------|
| EAN13 code | 8015747093286 |
|-------------------|---------------|

Packaging Information

| | |
|----------------------------------|---------------|
| Sub-packaging weight | 0,92 kg |
| Sub-packaging description | Carton box |
| Sub-packaging quantity | 2 Pcs |
| Sub-packaging EAN barcode | 8015747093293 |

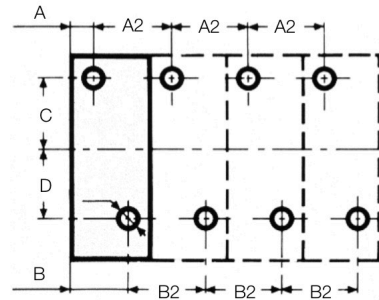
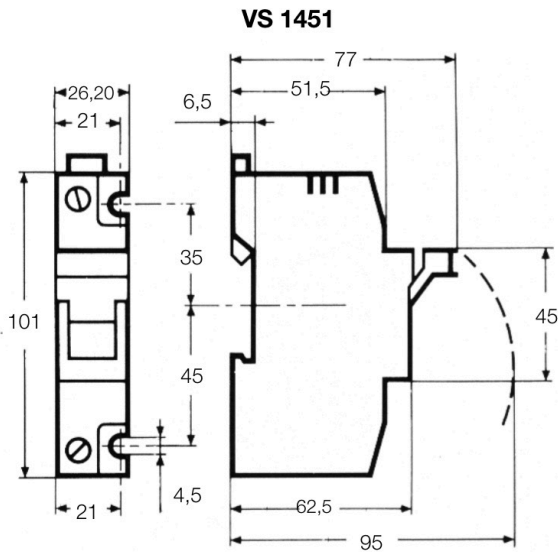
Part number

VS 1451.3



Catalogue drawings

Catalogue drawings



| | VS 1451 | VS 2258 |
|----|---------|---------|
| A | 21 | 26 |
| A2 | 26,2 | 35 |
| B | 21 | 26 |
| B2 | 26,2 | 35 |
| C | 35 | 35 |
| D | 45 | 60 |
| Ø | 4,5 | 4,5 |

Notes

Dimensions shown in mm are not binding and may be changed without notice.

Suitable for fixing on DIN-rail EN 60715.
Terminals with unlosable screw.
Fuse-links not included, types with sectionable neutral provided with fixed neutral cylinder.
Insulating parts realized in glass-fibre reinforced thermosetting polyester, colour grey RAL 7035.

Recommended maximum capacity:

- 380V : 25A
- 500V : 20A

Suitable for fixing on DIN-rail EN 60715.
Terminals with unlosable screw.
Fuse-links not included, types with sectionable neutral provided with fixed neutral cylinder.
Insulating parts realized in glass-fibre reinforced thermosetting polyester, colour grey RAL 7035.

Recommended maximum capacity:

- 380V : 50A
- 500V : 40A
- 660V : 25A