

## Han-Yellock 60 HSM 2xM25

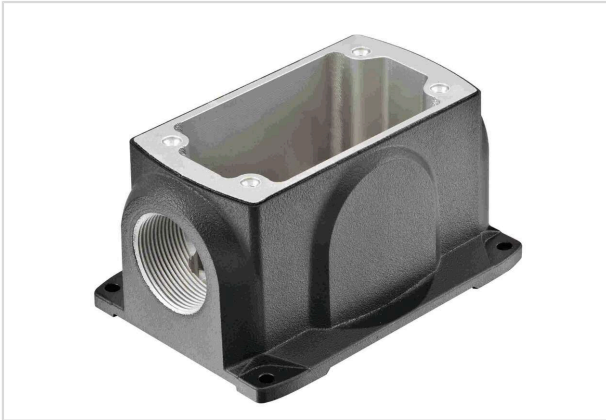


Image is for illustration purposes only. Please refer to product description.

Part number	11 12 600 1205
Specification	Han-Yellock 60 HSM 2xM25
HARTING eCatalogue	<a href="https://b2b.harting.com/11126001205">https://b2b.harting.com/11126001205</a>

### Identification

Category	Hoods/Housings
Series of hoods/housings	Han-Yellock®
Type of hood/housing	Surface mounted housing

### Version

Size	Han-Yellock® 60
Version	Side entry
Cable entry	2x M25
Locking type	Screw locking
Field of application	Hoods/housings for industrial applications

### Technical characteristics

Limiting temperature	-40 ... +125 °C
Note on the limiting temperature	For use as a connector according to IEC 61984.
Un-/locking temperature	-10 ... +85 °C
Degree of protection acc. to IEC 60529	IP65 IP67

### Material properties

Material (hood/housing)	Zinc die-cast
Surface (hood/housing)	Powder-coated
Colour (hood/housing)	RAL 7021 (black grey)
Material (seal)	NBR



**Pushing Performance**  
Since 1945

## Material properties

Material flammability class acc. to UL 94	V-0
RoHS	compliant
ELV status	compliant
China RoHS	e
REACH Annex XVII substances	Not contained
REACH ANNEX XIV substances	Not contained
REACH SVHC substances	Not contained
California Proposition 65 substances	Yes
California Proposition 65 substances	Nickel

## Specifications and approvals

Specifications	IEC 60664-1 IEC 61984
Approvals	DNV GL
CE	Yes

## Commercial data

Packaging size	1
Net weight	514 g
Country of origin	China
European customs tariff number	85389099
GTIN	5713140110243
eCl@ss	27440202 Shell for industrial connectors